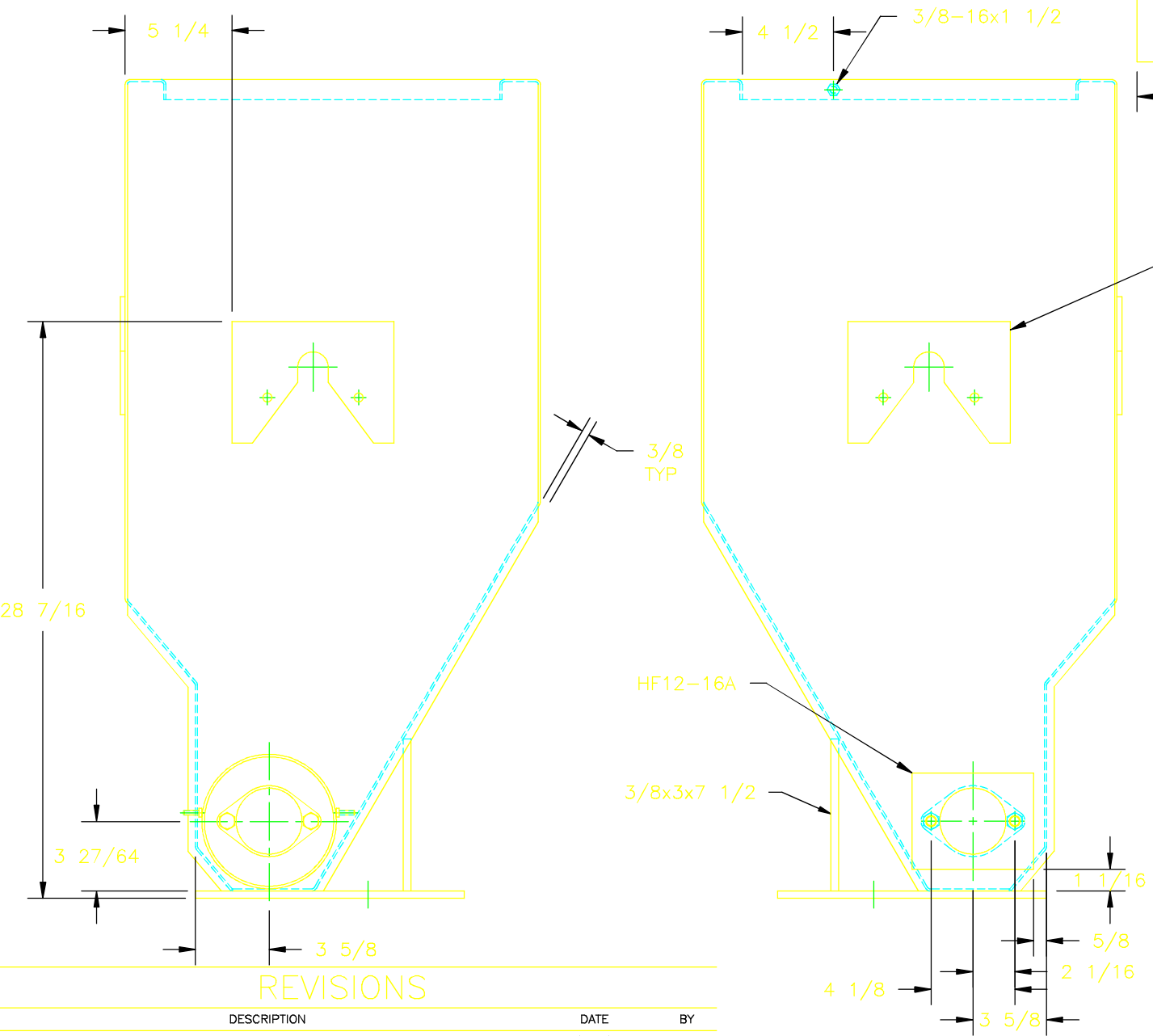
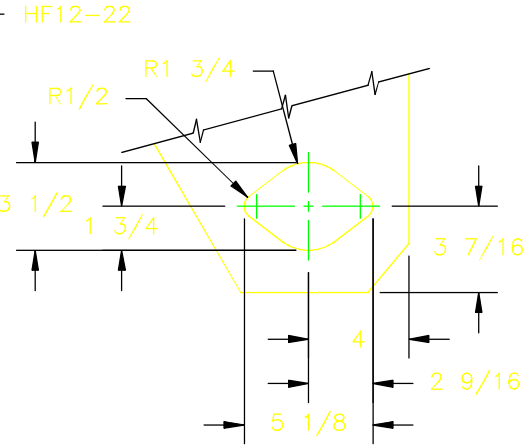


This drawing contains confidential proprietary information of Triple C, Inc. and is subject to return upon request. The furnishing of this drawing is not to be construed as the grant of any license, express or implied, to manufacture, have manufactured, use or sell the structures shown hereon.



DISCHARGE TUBE

MATL: 1/8x6 PIPE



CUT IN FEEDER BEFORE ATTACHING
MOTOR MOUNT PLATE (HF12-16A)

TRIPLE C, INC.

P.O. BOX 248, SABETHA, KS 66534
(785) 284-3674 FAX (785) 284-3931

MATERIAL: NOTED			
DWG PATH: \DWG\HF12			
DO NOT SCALE DRAWING	SHEET OF	SCALE: 1/8	DRAWN BY: CEDRIC HEINIGER 08/24/95
TOLERANCES Unless otherwise specified XX .010 XXX .005 XXXX .0005 X/X 1/32 ANGLE 0°30'	TITLE: RIGHT & LEFT SIDE VIEW		
DRAWING NUMBER: HF12-8			REV B

REVISIONS

LTR	DESCRIPTION	DATE	BY
A	HF12-22 BRACKET WAS ANGLE IRON	1/4/96	CED
B	1) REDESIGNED MOTOR HOLE	10/05/98	CED